



**SATTVA**  
Delivering High Impact.

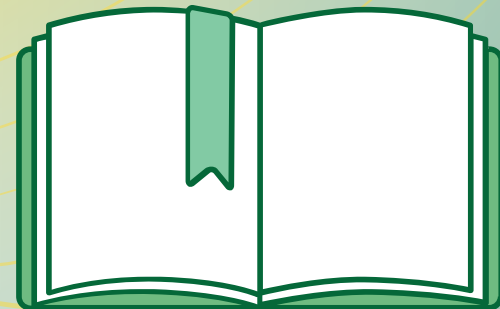
**#AGILITYIN  
ADVERSITY**



**AKANKSHA™**

Aspire. Achieve. Be the Change.

**AKANKSHA WILL IMPLEMENT  
A UNIQUE MODEL OF**



**BLENDED  
LEARNING**

**THAT INTEGRATES IN-PERSON  
AND VIRTUAL LEARNING.**

## **#REIMAGININGEDUCATION**

In the next phase when schools reopen physically, Akanksha's blended learning model will combine synchronous and asynchronous learning to complement remote learning.

Over the next 12-18 months, Akanksha will also engage with parents and communities in two key areas as a part of their blended learning model:

**PARENTS  
AS CO-  
EDUCATORS**



**FAMILY  
SAFETY &  
WELLBEING**



**#AGILITYIN  
ADVERSITY**

**alokit**

**ALOKIT LAUNCHED**



**PROJECT  
LIGHT**

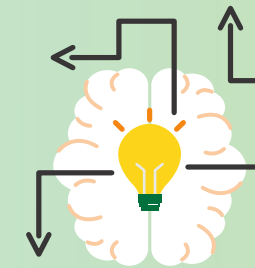
**IN APRIL TO SUPPORT  
SCHOOL LEADERS  
ACROSS INDIA.**

## #REIMAGININGEDUCATION

To gauge the problems in the education sector, Alokkit surveyed 291 school leaders from India and launched 'Project Light' to support them with the well-being of students and smooth remote learning. Over the next three months they will:



**USING  
TECHNOLOGY  
EFFICIENTLY**



**LEADERSHIP IN  
CRISIS**



**TEACHER  
ENGAGEMENT**



**PARENT  
ENGAGEMENT**



**MONITORING  
LEARNING**



**POST-  
LOCKDOWN  
PLANNING**

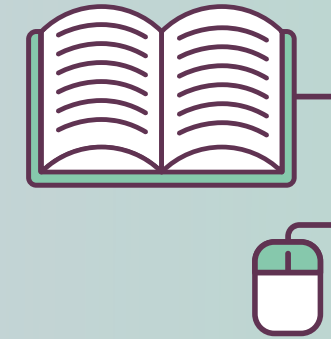
"In 2021, Alokkit plans to work with 150 affordable private schools and over the next three years support two states, in transforming their public education system through effective K-12 educational (including school) leaders".



**#AGILITYIN  
ADVERSITY**

**DURING THE  
PANDEMIC, DREAM A  
DREAM WORKED WITH  
THEIR STAKEHOLDERS  
TO DELIVER**

**E-LEARNING  
PROGRAMS**



**TO OVER 5000 YOUNG PEOPLE**

**DREAM  
~  
DREAM**

## **#REIMAGININGEDUCATION**

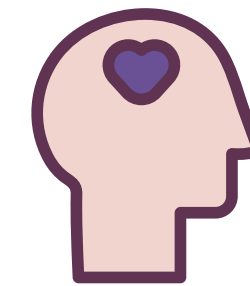
During the  
next 12-18  
months...

### **LSF-X SESSIONS**

Participants  
develop and  
explore life skills in  
a virtual setting.



...Dream a  
Dream will  
continue  
with...



Helping participants  
handle their emotions  
and feelings in a  
healthy manner.

### **REINTEGRATION SESSIONS**



**#AGILITYIN  
ADVERSITY**

**lfe**

**LEADERSHIP  
FOR EQUITY**

**THE LFE TEAM  
INITIATED THE  
STATEWIDE**



**DIKSHA  
'ABHYASMALA'**

**CAMPAIGN AND  
REACHED OUT TO 20  
LAKH STUDENTS.**

## #REIMAGININGEDUCATION

As part of the project the LFE team achieved the following impact:



**28**  
WEBINARS  
CONDUCTED

In partnership  
with SCERT to  
build capacity of

**450±**  
OFFICERS



**4**  
NEW DISTRICTS  
REACHED

To expand virtual  
training footprint,  
impacting

**30000±**  
TEACHERS



**50±**  
HOURS OF  
TRAINING CONTENT

Developed for  
training, & grade  
wise activity  
handbook for

**15000±**  
PMC STUDENTS

By the end of 2021, LFE aims to improve educational access for 3 million students in Maharashtra by enabling government bodies.



#AGILITYIN  
ADVERSITY



DURING THE COVID-19  
PANDEMIC, LEARNING  
CURVE LAUNCHED



CONNECT  
@HOME

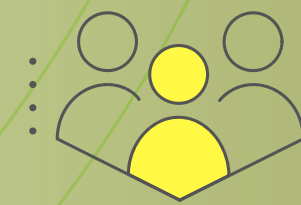
DESIGNED TO BRING SOCIAL-  
EMOTIONAL LEARNING TO  
CHILDREN AT HOME.

# #REIMAGININGEDUCATION

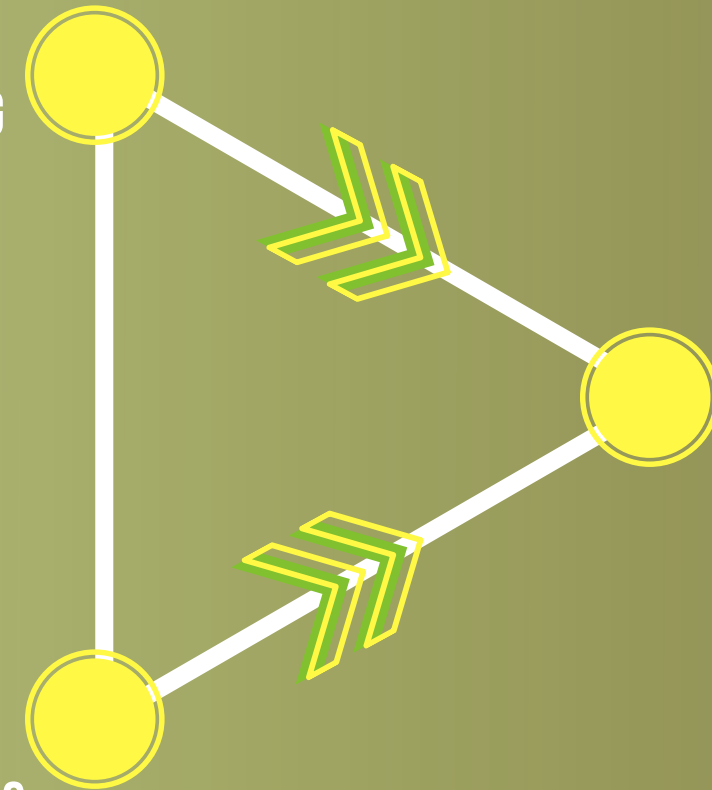
'Connect@Home' uses a combination of toolkits and parental guidance to ensure well-being of every child:



7 TOOLKITS  
ON SEL AND  
WELL-BEING



PARENT  
SUPPORT  
THROUGH IVRS



CURRENTLY IMPACTING  
**12,000**  
CHILDREN IN TELANGANA  
AND ANDHRA PRADESH.

By 2025, Learning Curve intends to enable 3 state governments to adopt and effectively implement social-emotional learning as part of mainstream education practice.



#AGILITYIN  
ADVERSITY

# ENGAGING CHILDREN IN JOYFUL & CREATIVE LEARNING EXPERIENCES.



NalandaWay



During the pandemic Nalanda Way responded to the crisis by creating the following initiatives...

## ART FOR WELLBEING - PARENT GUIDES

Helping caregivers  
& children with  
stress & isolation.

## TAKE IT EAZY

An audio based,  
30-day Wellbeing  
Programme.

## LEARN FROM HOME PROGRAMME

To improve  
Language, Math &  
foster creativity.



4000

Families accessed  
it in over 17  
languages.



6,20,000 ±

Reached students of  
Standard 10 in Govt  
schools across TN.



27000

Reached young,  
disadvantaged  
children.

# #REIMAGINING EDUCATION

Going forward Nalanda Way will work with partners and like-minded organisations to **expand their impact** and reach more disadvantaged children.



#AGILITYIN  
ADVERSITY



QUEST  
ALLIANCE

WORKING WITH THE  
YOUTH FOR

SEAMLESS

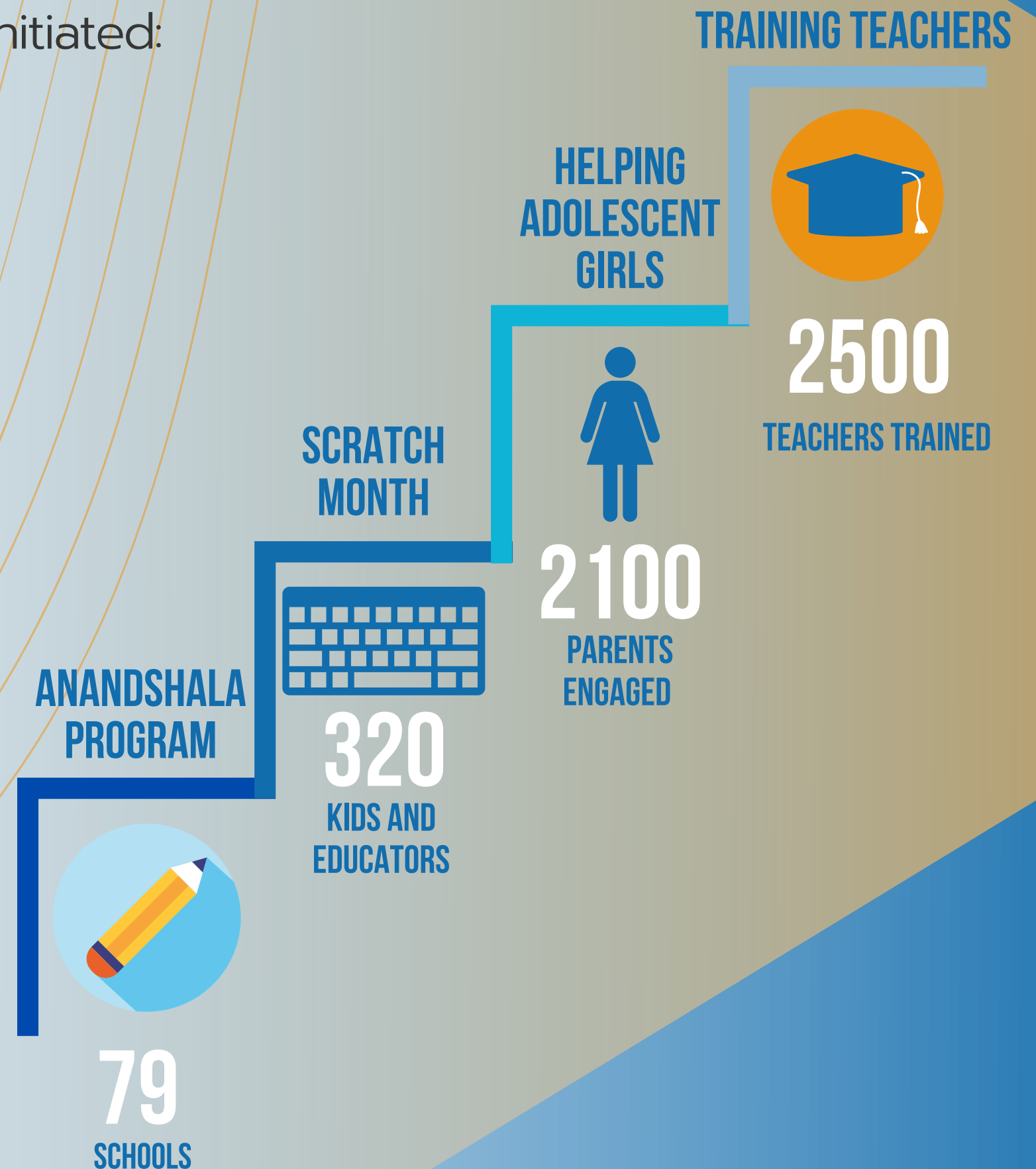
SCHOOL-TO-WORK TRANSITION  
USING EDUCATION TECHNOLOGY

## #REIMAGININGEDUCATION

Going ahead, volunteers and teachers will mobilise 4-8 students and lend their smartphones or other devices to help students learn via DigiSATH to prevent dropouts.

The Anandshala program's Community Youth Leadership initiative in Bihar, will also run community-based libraries that focus on diversity, inclusion, gender equity, child marriages and other social issues.

In response to the COVID-19 pandemic, Quest Alliance initiated:





**#AGILITYIN  
ADVERSITY**



**ACCOUNTABILITY FOR  
CHILDREN'S LEARNING THROUGH  
PARENTAL PARTNERSHIPS AND**

**BUILDING  
LEADERSHIP  
CAPACITY**

**OF PARENTS, TEACHERS AND  
COMMUNITY MEMBERS.**

# #REIMAGININGEDUCATION

In response to the COVID-19 pandemic, Saajha connected with over 25000 parents via:



**SNEH SETU**  
INITIATIVE LED BY  
TRIBAL DEV. DEPT,  
MAHARASHTRA GOVT

Facilitated telephonic  
conversations between  
teachers and families.

**12000**  
TRIBAL FAMILIES  
ENGAGED



**SNEH SAMWAD**  
ALONG WITH WITH  
MCGM & UNICEF (INDIA)

To create an effective  
home learning structure  
by supporting parents.

**3000**  
FAMILIES  
CONNECTED



**WHATSAAP  
BOT**

Serving as an Ask-Me-  
Anything service for  
parents in Delhi

**6300**  
USERS TILL  
DATE

Saajha has engaged in designing guidelines for planned reopening by enabling preparedness of schools and stakeholders.





**#AGILITYIN  
ADVERSITY**

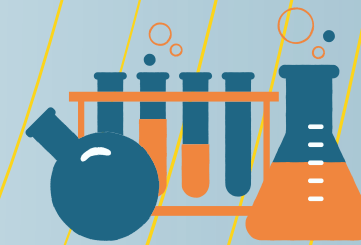


**DUE TO THE COVID-19  
PANDEMIC, AGASTYA HAS  
PIVOTED TO  
DIGITAL ONLINE  
EDUCATION**

**INTEGRATING ONLINE  
CONTENT WITH CORE  
HANDS-ON PEDAGOGY.**

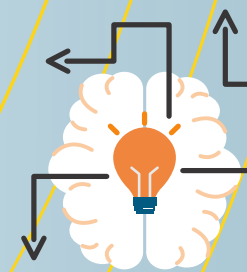
## #REIMAGININGEDUCATION

As part of their efforts to continue serving communities during the Covid-19 outbreak, Agastya has initiated:



**VISUAL SCIENCE  
EXPERIMENTS**

As part of their digital-online classes, for simple and replicable experiments at home



**DESIGN THINKING**

Initiative to teach design thinking to mothers in villages



**COVID-19  
EDUCATION  
MODULES**

To help children, teachers and parents understand and deal with COVID-19

Agastya will continue to build an innovative new curriculum integrating science, art and design thinking with a heightened focus on R&D. They are also looking to create a virtual experience of their 172-acre creativity campus.



#AGILITYIN  
ADVERSITY



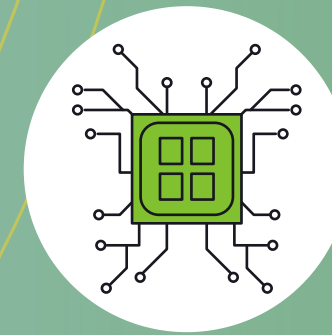
REACHING 100,000 PARENTS AND  
CHILDREN, THROUGH THE

**INTER-GENERATIONAL  
COPING AND  
LEARNING PROGRAM**

WHICH WAS DEVELOPED TO ENSURE  
WELL-BEING AND CONTINUED  
LEARNING OF PRIMARY SCHOOL  
CHILDREN DURING THE PANDEMIC.

# #REIMAGININGEDUCATION

Going forward ChildFund plans to continue with learning support, through a home-based blended approach as well as neighborhood learning sessions until schools reopen. They are simultaneously working with the School Management Committee (SMCs) and education department in supporting the re-opening of the schools which means:



SETTING UP AN EFFECTIVE SYSTEM  
TO MAP AND TRACK CHILDREN,  
ENSURING THEY DON'T DROPOUT



PLAN FOR GETTING THE SCHOOL  
INFRASTRUCTURE SANITISED  
AND CAPACITATE TEACHERS.



CONDUCTING SPECIAL BRIDGE SESSIONS  
FOR ACADEMIC AS WELL AS SOCIAL  
AND EMOTIONAL LEARNING SUPPORT.

In the long term when the schools reopen, ChildFund plans to work closely with the communities to ensure all children go back to the school, minimising the risk of dropouts, while also providing special academic and well-being support for the children.

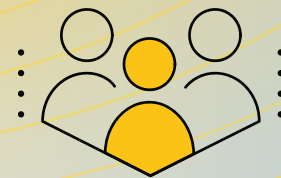


**#AGILITYIN  
ADVERSITY**



**MENTOR TOGETHER PROVIDES  
ONE-TO-ONE MENTORING  
TO HELP YOUNG PEOPLE FROM  
DISADVANTAGED BACKGROUNDS.**

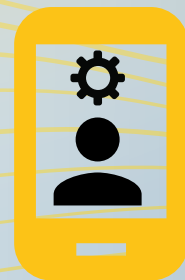
In response to the covid-19 pandemic, Mentor Together undertook-



**VIRTUAL  
ONBOARDING OF  
MENTEES**

Virtual outreach increased the number of mentees in

**29  
COLLEGES**



**MENTOR  
TOGETHER APP**

In the past 6 months, the app was downloaded by

**7273  
MENTEE AND  
MENTORS**

The goal for the year is to achieve 2250 mentorship matches through the Mentor To Go Virtual Mentoring Platform.

## **#REIMAGININGEDUCATION**

A newly set up foundation: the Mentortech Collective Foundation, is developing the Mentor To Go platform into an open-core SaaS platform for mentoring organisations to use globally, starting with a national rollout across Canadian mentoring non-profits in January 2021.



**#AGILITYIN  
ADVERSITY**

# Udhyam

... Vyapaar ...

**ENABLING  
NANO-  
ENTREPRENEURS**

**TO FLOURISH  
ECONOMICALLY AND SOCIALLY**

## #REIMAGININGLIVELIHOOD

Udhyam Vyapaar works with small businesses such as chaiwallas, istriwallas, street food vendors that have been hard hit by COVID. Its 3 areas of interventions are:

### TECH INTERVENTION



Training to scale their businesses online

### FINANCE INTERVENTION



Access to zero-interest loans and trainings to improve financial literacy

### CAPACITY BUILDING

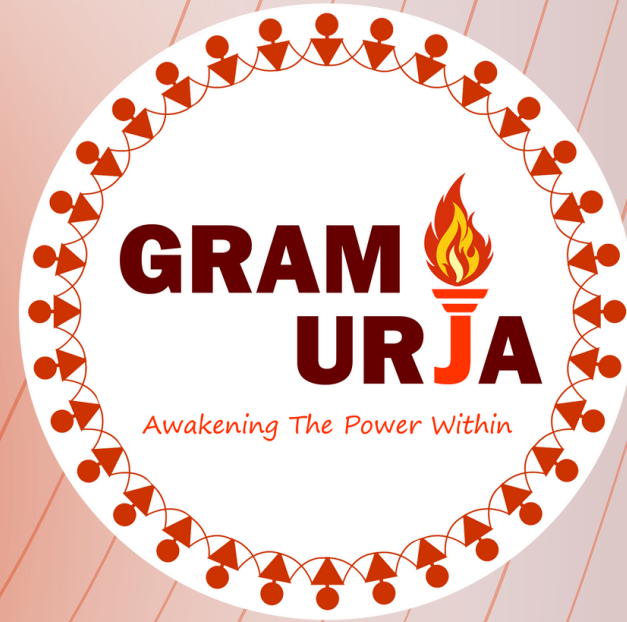


Training in fundamentals of business- Marketing decisions, Business planning and Customer service

Going ahead, Udhyam's goal is to create sustained income upliftment for 10,000 vyapaaris by June 2021.



**#AGILITYIN  
ADVERSITY**



# EMPOWERING FUTURE GENERATIONS

**BY PROVIDING EDUCATION AND  
LIVELIHOOD SUPPORT.**

During the pandemic, GramUrja focused on continuity of education for rural remote located students along with distribution of masks, ration, and monetary support to daily wage earners.

Going ahead, Gram Urja has formulated mid to long-term plans for-



## CAPACITY BUILDING

Building resilience capacity of MSMEs in rural areas

**400 ±**  
ENTREPRENEURS



## EDUCATIONAL PROGRAMS

After school program and in-school program in rural Maharashtra

**6000 ±**  
GOVT SCHOOL  
STUDENTS



## CONNECTING WITH GOVT SCHEMES

Providing rural people knowledge and access to relevant government schemes and programs by supporting basic documentation process

**48**  
GOVT SCHEMES



**#AGILITYIN  
ADVERSITY**



# COMMUNITY DEVELOPMENT

**BY BLENDING TRADITIONAL  
KNOWLEDGE AND MODERN  
SCIENCE TO PROMOTE EQUALITY.**

GRAVIS undertook various relief efforts for rural communities during the pandemic including dissemination of covid-19 information, distribution of family kits and provision of medical support.

GRAVIS's work is centred in the Thar desert, one of the most difficult climatic zones in the world, where the pandemic has worsened the complexity of food and income security for the rural population.

Going ahead, it intends to expand its work in the following spheres:



Continuous **capacity building** of rural communities will be emphasized in years to come, alongside building a **training centre** for individuals and organisations willing to work for development in the Thar desert.



**#AGILITYIN  
ADVERSITY**



**PROVIDING CHILDREN FROM  
DISADVANTAGED  
BACKGROUNDS WITH**

**HOLISTIC  
EDUCATION**

**THROUGH HIGH-QUALITY ACADEMICS,  
ADEQUATE NUTRITION,  
COMPREHENSIVE HEALTHCARE, AND  
EXPOSURE TO CO-CURRICULAR AREAS**

Located in village Purkal, the society caters to 509 students from 146 villages in Uttarakhand. In response to the pandemic, PYDS adapted to 100% online classes with a flexible timetable, distributed books and devices, and engaged in co-scholastic learning to ensure zero dropout of students.

As schools reopen, PYDS is looking to incorporate the following practices:



### **EXPERIENTIAL LEARNING**

A project and hands-on learning model where children are able to explore, connect and express themselves in a variety of ways



### **INTEGRATING TECHNOLOGY**

Incorporating technology into the school's teaching and learning environment, through a well crafted digital strategy



**#AGILITYIN  
ADVERSITY**



# EMPOWERING VULNERABLE AND MARGINALISED COMMUNITIES

**THAT FACE EXCLUSION  
AND SOCIAL  
DISCRIMINATION**

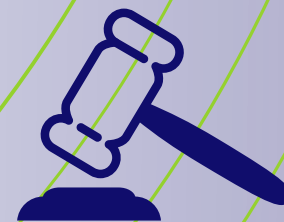
Gopabandhu Seva Parisad (GSP) has been serving excluded and marginalized communities from Odhisa for over two decades.

Going ahead, GSP aims to focus on issues of tribals in Koraput district and marginalized artisans in Puri district, adopting the following approach:



## ENHANCE ACCESS TO RESOURCES

Such as land, water, forests alongside increasing productivity of resources sustainably and equitably



## DEVELOP A PRO-TRIBAL ENVIRONMENT

Through effective implementation of legislation governing control & access to resources by poor tribal people



## DESIGN YOUTH-FOCUSED LIVELIHOOD PROGRAMS

To provide sustainable and socially constructive livelihood pathways that enhance individual and community livelihood